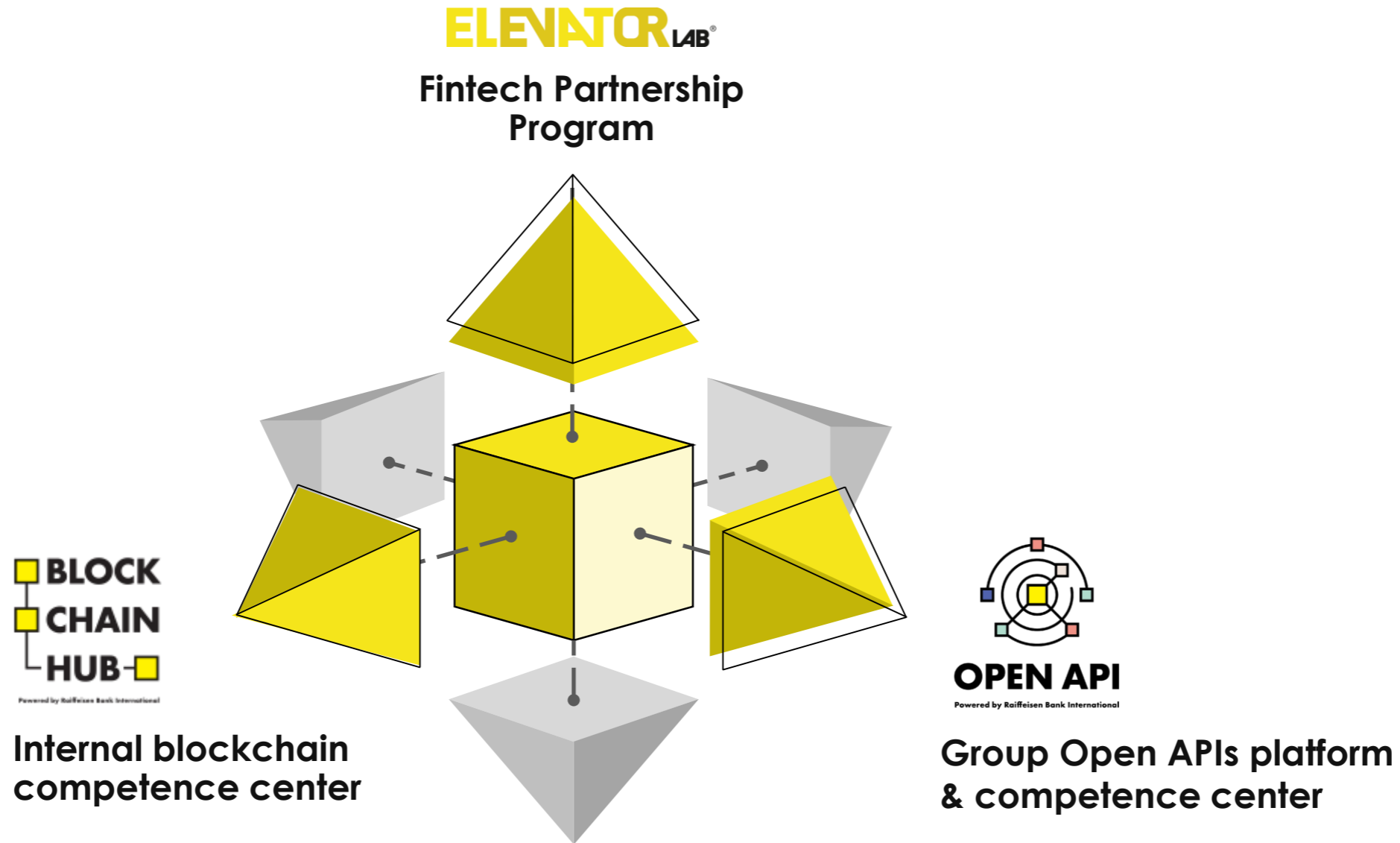


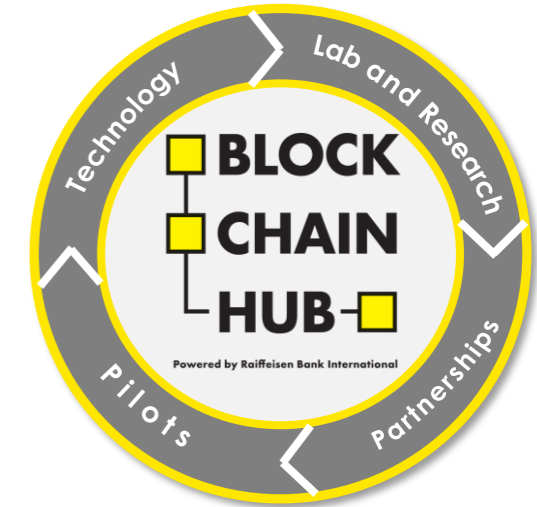
Strategic Partnerships and Ecosystems are in core of Raiffeisen Bank International's values



Within the Blockchain Hub we are currently focusing on several fields of applications

Blockchain Hub

RBI's Blockchain Hub's goal is to increase the efficiency of internal data and knowledge sharing within the group



RBI differentiated and focuses on the following fields

| Areas | E-money/ Payments | Identity | Tokenization | Trade Finance |
|-------------|---------------------------------------------------------------|--------------------------------------------------------|-------------------------------------------------------------------------------------|-----------------------------------------------------------|
| Description | Cash on ledger and domestic and international payment systems | KYC, AML and the representation of market participants | Crypto assets, fractional ownership, digital representation of traditional equities | Financing of international transfer of goods and services |

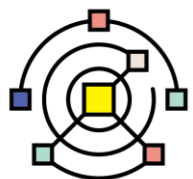
For any questions and potential cooperation get in touch with us at:

Email:

blockchain@rbinternational.com

Website:

<http://blockchain.rbinternational.com/>



OPEN API

Powered by Raiffeisen Bank International

will enable RBI to build new and innovative products and services, discover new partnerships and value chains & scale up innovation!

We aim to:

1. Enable the access to standardized data and services via Group Open APIs

We provide standardised access to accounts & payments following Berlin Group standard -> **PSD2 APIs**.

2. Enable personalized products and services by 3rd party data aggregation

RBI and our EU based network banks are owning TPP certificate which enable us to consume PSD2 APIs in order to provide **the service of aggregated accounts and payment initiation**.

3. Become preferred partner for 3rd party cooperation in CEE

We aim to connect our banking group with potential partners, through open, data-driven innovation, in order to discover new use cases which enable superior customer experience.

<https://api.rbinternational.com/>

For any questions and potential cooperation get in touch with our product owners:

Accounts & Payments (PSD2 APIs)

andrea.cintulova@rbinternational.com

PSD2 account aggregation

martin.hains@rbinternational.com

Group API Marketplace

catalina.arateanu@rbinternational.com

ELENATOR^{LAB}

Register for RBI's
Fintech Database
rbi-fintechdatabase.com

Let's bring your solution to our markets!

Raiffeisen Bank International's fintech partnership program is offering later-stage fintech startups support in developing unique services for our customers: Develop your proof of concept, gain access to our API Marketplace and sandbox data and work in close collaboration with leading banking experts. **Get the chance to become a partner of Raiffeisen Bank International Group!**



The largest corporate fintech program in CEE



Structured 4-month proof of concept phase



Leading banking experts involved



Equity free program



Dedicated PoC fund



Access to API Marketplace



Possible strategic long-term partnership with the RBI Group

Elevator Lab runs three types of programs:

ELEVATOR LAB® Partnership Program

Chance to become a partner of Raiffeisen Bank International Group!

- For global later-stage fintechs
- 4-month program
- Pilot project with leading banking experts
- International Demo Day

ELEVATOR LAB® Challenge

Possible pilot project with local Raiffeisen Bank!

- For local/regional later-stage fintechs
- 2 to 3 month program
- Entry point to the local Raiffeisen Bank
- Possibility to pitch your product in front of the Management Board of the local Raiffeisen Bank
- Winners ceremony

ELEVATOR LAB® Bootcamp

Quick intro into the startup world with development possibilities!

- For local seed/early-stage startups/single founders
- 2 to 3 month educational program
- Development of a Minimum Viable Product (MVP) with local experts

Additionally, Elevator Lab cooperates closely with RBI's corporate venture capital entity

ELEVATOR
VENTURES®



More information at
elevator-lab.com

The RBI Fintech Database is your entry point into RBI Group

About the Fintech Database:

You have a fintech startup and want to get in touch with RBI Group?

Take the first step and register NOW on RBI's Fintech Database even if there is no open call for applications!

The fintech database is the tool with which we're managing all fintech contacts. You can create a profile of your fintech and upload your pitch deck, we constantly screen new registrations and will get back to you by e-mail.

Your benefits:



Visibility to several banking experts & fintech managers across all our 13 banks within RBI Group in CEE and Austria



Get informed automatically about open calls for Elevator Lab



Get contacted in case of on-demand PoCs taking place additionally to Elevator Lab initiatives



Exposure to Elevator Ventures, RBI's venture capital entity

REGISTER NOW:

1

Go to <https://www.rbi-fintechdatabase.com/login>

2

Register your fintech and upload your pitchdeck

3

Apply to an Elevator Lab program

Please visit the Elevator Lab website to find out more about the topic tracks & timelines: <https://elevator-lab.com/partnership-program/>
In case of any questions, please contact startups@rbinternational.com